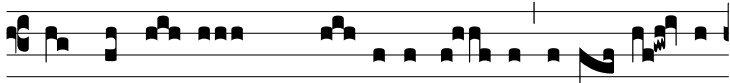


Intr.
2.

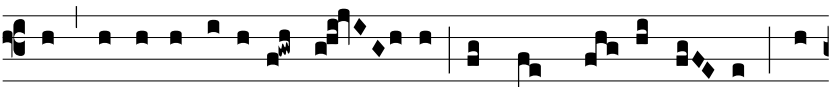


N

ARRAVÉ-RUNT * mi- hi i-ní- qui fabu- la- ti-



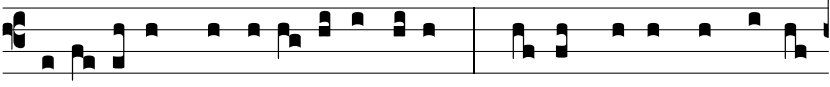
ó- nes, sed non ut lex tu- a: ego autem loqué-



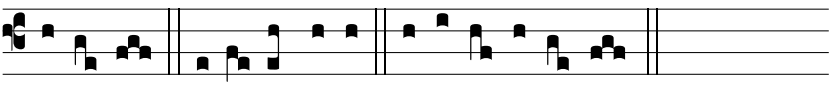
bar de testimóni- is tu- is in conspé-ctu re- gum, et



non confun-dé- bar. Al-le-lú- ia, alle- lú- ia. *Ps.*



Be-á- ti imma-cu-lá-ti invi- a: * qui ámbu-lant in le-ge



Dómi-ni. Gló-ri- a Patri E u o u a e