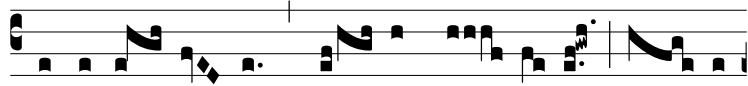
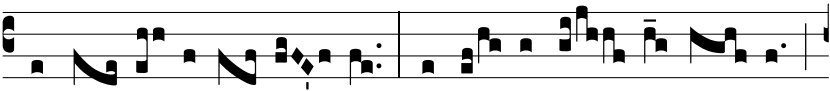


Intr.
8.

B



ENEDÍ-CTA sit * san-cta Trí- ni-tas, at- que



indi- ví- sa U- ni- tas : confi- té- bi- mur e- i,



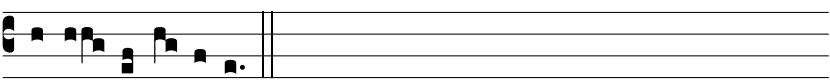
qui- a fe- cit no- bís- cum mi- se- ri- cór- di- am su-



am. *Ps.* Dómi- ne Dó- minus noster : * quam admi- rá- bi- le



est nomen tu- um in uni- vérsa terra! Gló- ri- a Patri.



E u o u a e.