

Tract.
8.

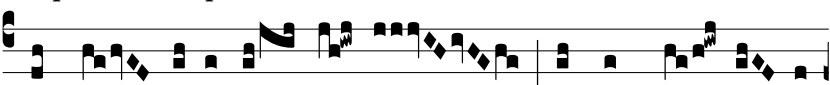


N

OLÍ- TE * di- lí- ge- re mun- dum,



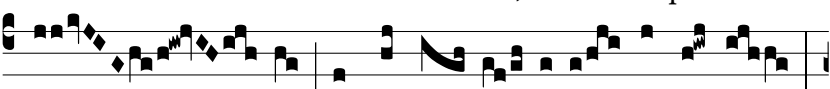
neque e- a quae in mundo sunt.



Si quis dí- li- git mundum, non est cá- ri- tas



Pa- tris in e- o. Ψ . Omne quod est in



mun- do, concu- pi- scén- ti- a carnis est,



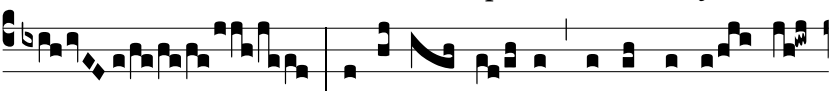
et concu- piscén- ti- a o- cu- ló- rum,



et su- pér- bi- a vi- tae. Ψ .



Et mundus tran- sit, et concu- piscén- ti- a e- jus:



qui autem fa- cit vo- luntá- tem De-



i, ma- net * in aetér- num.

