

Grad.

5.

N



Ova bel- la \* e-lé- git Dó- mi- nus, et por-



tas hósti- um ipse subvértit.



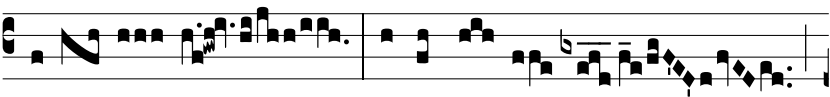
Ψ. Ubi col- lí- si sunt

cur-



rus, et hósti- um suffo- cá-

tus est



exér- ci- tus,

i- bi nar- rén- tur

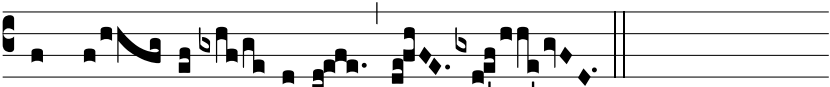


justí- ti- ae Dó-

mi- ni,

et clemén- ti-

a



\* in for- tes Is- ra- el.