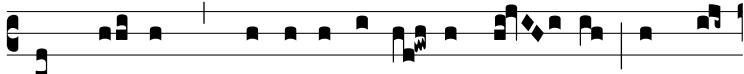


Intr.  
5.



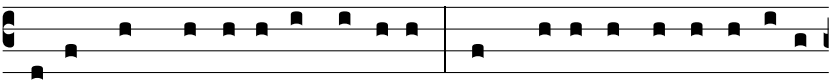
**L** OQUÉ-BAR \* de testimó-ni- is tu- is in con-



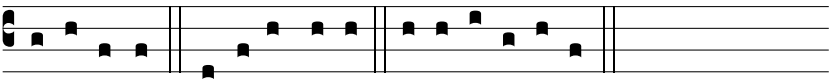
spéctu re- gum, et non con-fundé- bar: et me-di-tá- bar



in mandá- tis tu- is, quae di-lé- xi ni- mis. *Ps.*



Bonum est confi-té-ri Dómino: \* et psálle-re nómi-ni tu-o



Altíssime. Gló-ri- a Patri E u o u a e