

Grad.  
1.



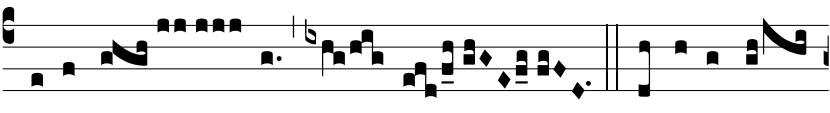
QUI timé- tis \* Dó- minum, lau-



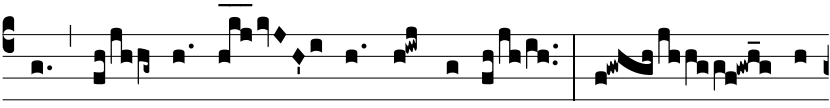
dá- te e- um :



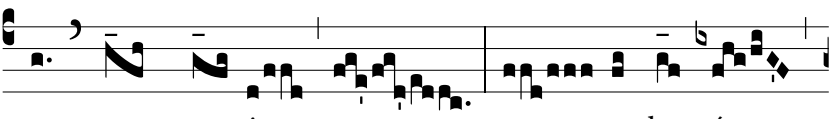
uni- vér- sum se- men Ja- cob, glo-



ri-fi-cá- te e- um.  $\Psi$ . Time- at e-



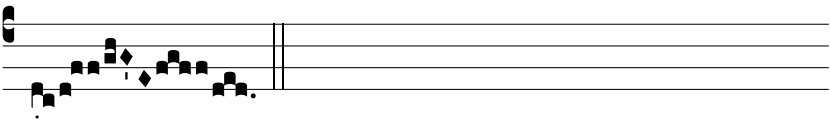
um o- mne se- men Is- ra- el : quó- ni-



am non spre- vit, ne- que de-spé-



xit depre- ca- ti- ó- nem \* páu- pe-



ris.