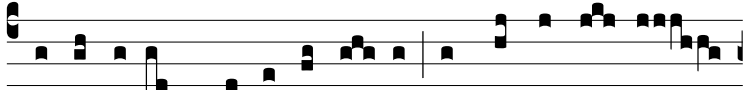
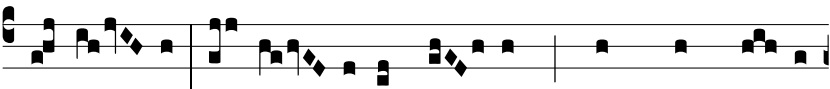


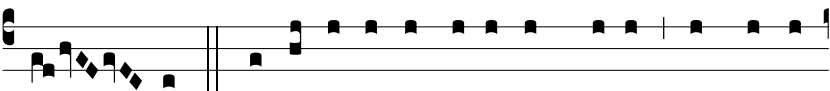
Intr.
3.



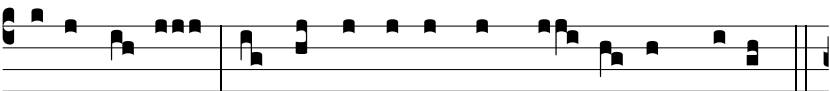
E GREDERE * de terra tu- a, et de domo pa-



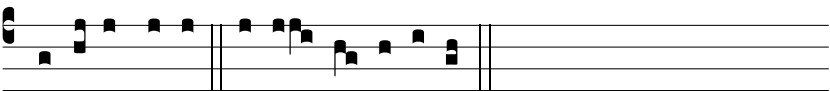
tris tu- i, et ve- ni in ter- ram, quam monstrá- bo



ti- bi. *Ps.* Obli- vísce- re pópu- lum tu- um, et domum



patris tu- i * et concu- píscet rex de- có- rem tu- um.



Gló- ri- a Patri E u o u a e