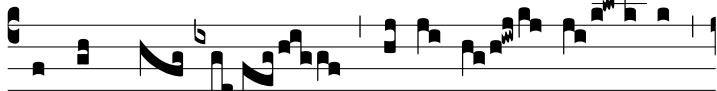


Grad.
5.

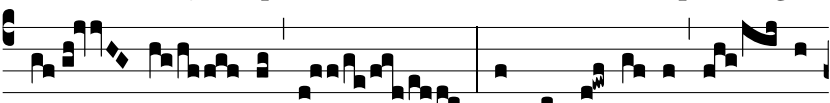


M

EMENTÓ- TE * mi- ra- bí- li- um



e- jus, quae fe- cit: pro- dí- gi-



a e- jus, et ju- dí- ci- a o- ris



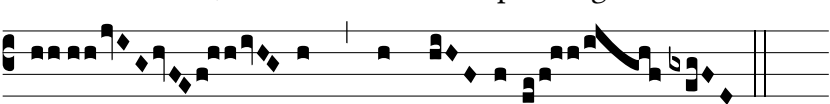
e- jus. Ψ . Pó- su- it



in e- a ver- ba signó-



rum su- ó- rum, et pro- di- gi- ó- rum su-



ó- rum * in ter- ra.