

Tract.
8.



D

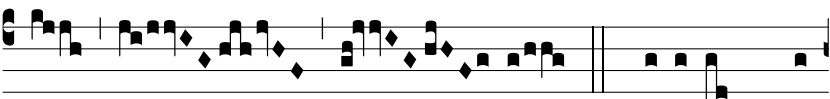
E-SIDÉ- RI- UM * á- nimae e-



jus tri- bu- í- sti e- i: et vo- luntá- te



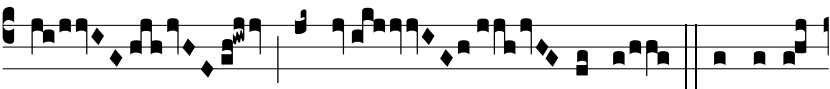
la- bi- ó- rum e- jus non fraudásti e-



um Ψ . Quóni- am prae-



ve- ní- sti e- um in be- ne- di- cti- óne



dulcé- di- nis Ψ . Po- su- í-



sti su- per ca- put e- jus co-



ró- nam de lá- pi- de * pre- ti- ó-

