

Tract.

2.

A



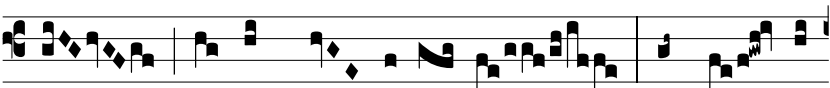
NGELIS su- is * De- us mandá- vit



de te, ut custó- di- ant te in ómni- bus



vi- is tu- is. Ψ . In má- ni- bus por- tá- bunt



te, ne unquam offén- das ad lá- pi-



dem pedem tu- um. Ψ . Su- per áspi- dem



et ba- si- lís- cum ambu- la-



bis, et conculcá- bis le- ó- nem * et dra-



có- nem.