

Intr.
5.



L

LOQUÉ-BAR * de testimó-ni- is tu- is in con-



spéctu re- gum, et non con-fundé- bar: et me-di-tá- bar



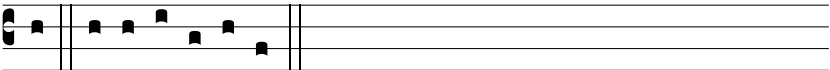
in mandá- tis tu- is, quae di-lé- xi ni- mis. *T. P.*



Alle- lú- ia, alle- lú- ia. *Ps.* Be- á- ti imma- cu- lá- ti



in vi- a: * qui ámbu- lant in lege Dómi- ni. Gló- ri- a Pa-



tri E u o u a e