

Tract.
2.

T



U es

* Pe- trus

et su-



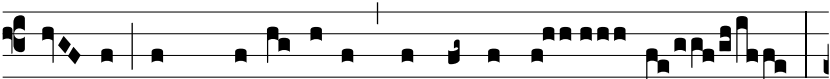
per hanc petram

aedi-fi-cá- bo

Ecclé-si-

am me- am. Ψ . Et por-

tae ín-

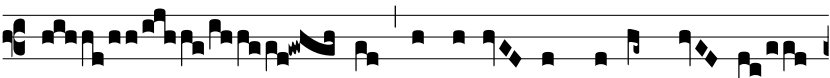


fe- ri non praeva-lébunt advérsus e-

am:

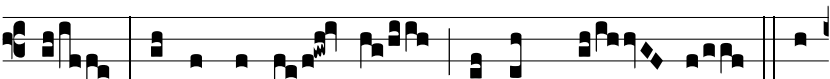


et ti-bi da- bo

claves regni coe- ló- rum. Ψ . Quod-

cúm-

que li-gáve- ris super ter- ram,



e- rit li- gá- tum

et in coe-

lis. Ψ . Et

quodcúmque

sólvé- ris su-



per ter-

ram,

e- rit so- lú- tum *



et in coe-

lis.