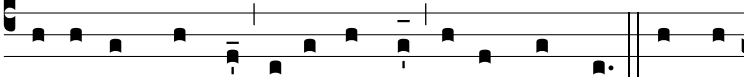
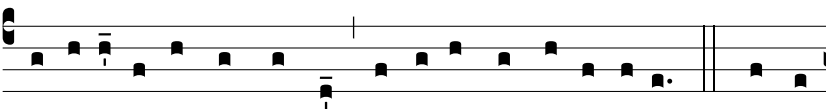


Seq.
4.

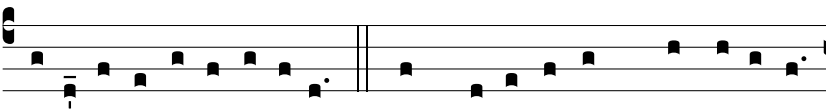
Q



UI re-gis scepra forti dextra so-lus cuncta : Tu ple-



bi tu-a osténde magnam exci-tando pot-énti-am. Praesta



dona il-li sa-lu-tá-ri-a : Quae praedi-xé-runt prophé-ti-ca



va-ti-cí-ni-a. A cla-ra po-li ré-gi-a : In nostra Je-sum



mitte Dómi-ne arva. A-men.