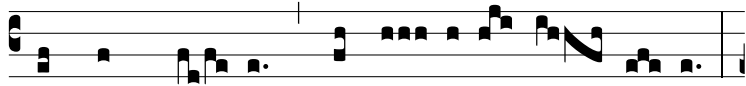


Intr.
7.

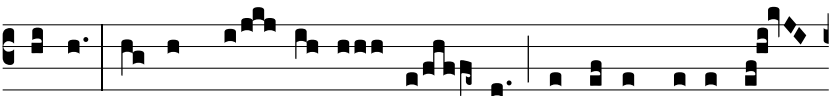
S



IGNUM ma-gnum * appá- ru-it in cae- lo:



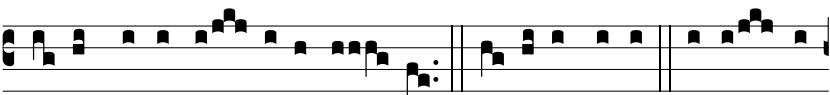
mú- li- er amícta so- le, et lu- na sub pé- di- bus



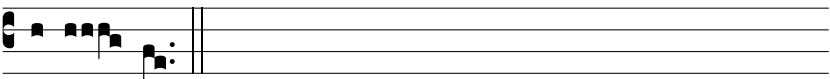
e- jus, et in cá- pi- te e- jus co- róna stellá- rum



du- óde- cim. *Ps.* Cantá- te Dómino cánti- cum novum: *



qui- a mi- ra- bí- li- a fe- cit. Gló- ri- a Patri. E u o



u a e