

Intr.
2.

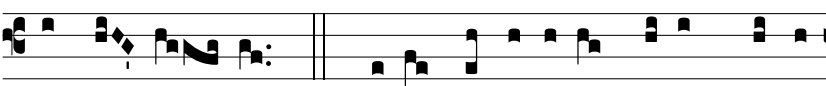
E



C-CE * advé- nit domi- ná-tor Dó- mi- nus :



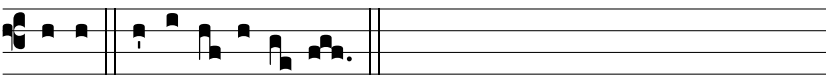
et regnum in ma- nu e- jus, et pot- éstas, et



impé- ri- um. *Ps.* De- us, ju- dí- ci- um tu- um Re- gi



da : * et justí- ti- am tu- am Fí- li- o Re- gis. Gló- ri- a



Patri. E u o u a e.