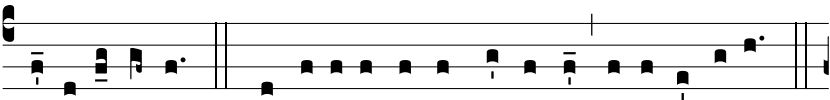


R. br.
6.

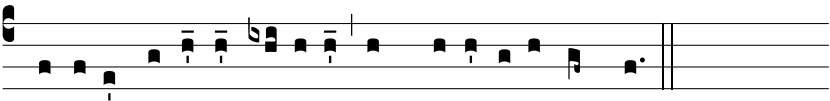


M

E-ri-tis et pré-ci-bus * Be-á-tæ Jo-ánnæ. * Al-le-lú-



ia, alle-lú-ia. Ψ . Pro-pí-ti-us esto Dómi-ne pópu-lo tu-o. Ψ .



Gló-ri-a Patri, et Fí-li-o, et Spi-rí-tu-i Sancto