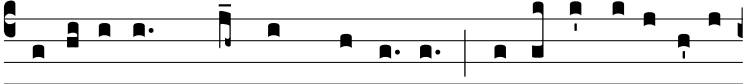
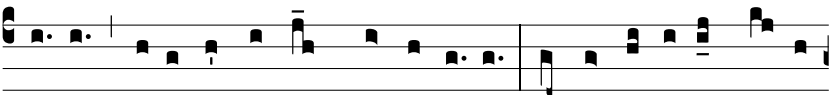


Ant.  
8.



S

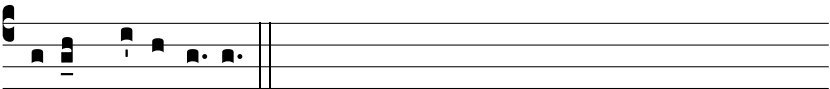
Imi-le est \* regnum cæ-ló-rum hómi-ni nego-ti-a-



tó-ri quæ-ré-nti bo-nas marga-rí-tas : invé-nta una pre-ti-



ó-sa, de-dit ó-mni-a su-a, et comp-a-rá- vit † e-am. *T.P.*



† e-am, alle-lú-ia.