

Ant.  
2 d.

V



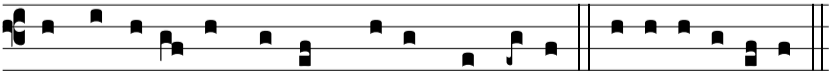
Os e-stis lux mundi. \* Non po-test cí-vi-tas abscón-



di supra montem pó-si-ta ; neque accéndunt lu-cérnam,



et ponunt e-am sub mó-di-o, sed super cande-lábrum,



ut lú-ce-at ómni-bus qui in domo sunt. E u o u a e.