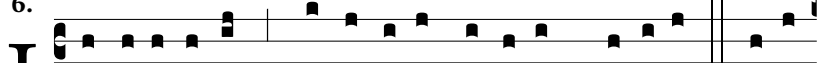
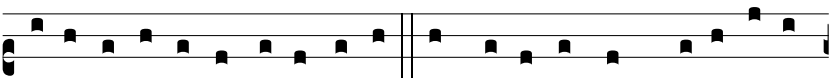


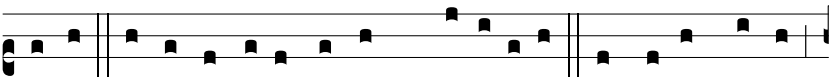
6.



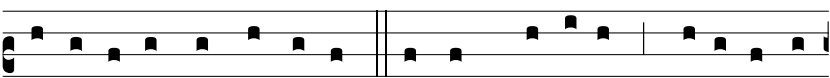
n-vi-o-lá-ta, intácta et casta es, Ma-rí-a, Quæ es



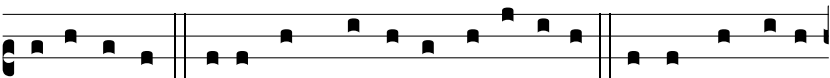
effécta fúlgi-da cæ-li porta. O ma-ter alma Christi ca-ríss-



ima, Súsci-pe pi-a laudum præcóni-a. Nostra ut pu-ra



pécto-ra sint et corpo-ra, Te nunc flá-gi-tant devó-ta cor-



da et o-ra. Tu-a per pre-cá-ta dulcí-sona No-bis concédas



vé-ni-am per s æ cu-la, O be-ní-gna, Quæ so-la invi-o-



lá-ta perman-sí-sti. **T.P.** A-lle-lú-ia.