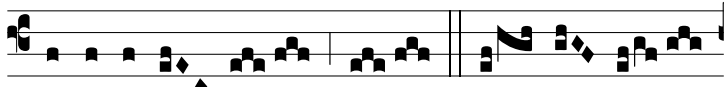


Tract.
2.

C



onfi-témi- ni

Dó- mi- no



quó- ni- am bo- nus:

quóni- am in sá-



cu- lum mi- se- ri- córdi- a e- jus. Ψ . Quis loqué- tur



po- tén- ti-

as Dó- mi- ni,

audi- tas fá- ci-



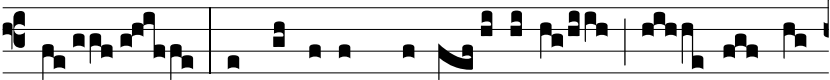
et o- mnes laudes e- jus? Ψ . Be- á-



ti, qui custó- di-

unt ju- dí-

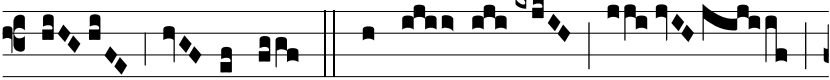
ci-



um,

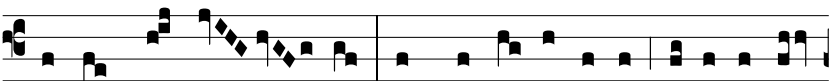
et fá- ci- unt justí- ti- am

in o- mni



tém-

po- re. Ψ . Memén- to



nostri, Dó- mi-

ne,

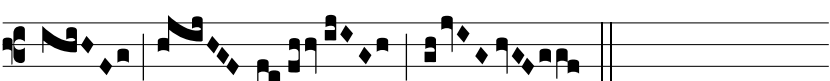
in be- neplá- ci- to pópu- li tu-



i:

ví- si- ta nos

in sa- lu- tá- ri



tu-

o.