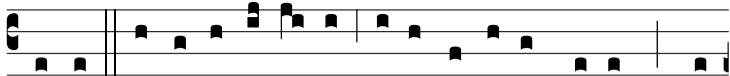


Ant.  
7.



**D**

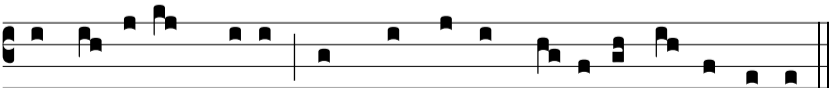
i-xit pa-terfamí- li- as ope-rá-ri- is su- is: Quid



hic sta- tis to-ta di- e o-ti- ó-si? At il-li respondéntes,



di-xé-runt: Qui- a nemo nos condú-xit. I- te et vos



in ví-ne-am me-am, et quod justum fú- e-rit da-bo vo-bis.