

Tract.
2.

C



æ-li

distil-lavé- runt

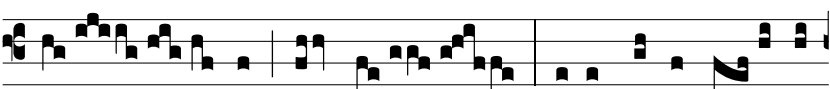


a fá- ci- e De- i Sí-na- i,

a fá-ci-



e De- i Isra- ðl. Ψ . Dóminus da-



bit ver- bum

evange- li- zán- ti-

Hic genuflectitur usque ad Reple.

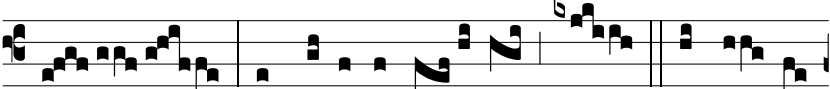


bus, virtú-te multa. Ψ . Ve- ni,



Sancte Spí- ri-

tus, reple tu- ó- rum corda fi- dé- li-



um:

et tu- i amó- ris

in e- is



i- gnem accén-

de.