

Comm.

5.

B



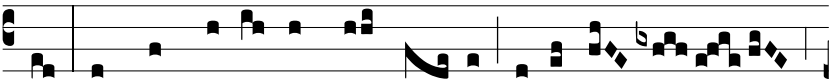
e-ne-dícta es tu, fí-li-a, a Dómino De-o



excél-so præ ómni-bus mu-li-é-ri-bus super ter-



ram: qui-a no-men tu-um i-ta magni-fi-cá-



vit, ut non re-cé-dat laus tu-a de o-re



hómi-num. *T. P.* Al-le-lú-ia.