

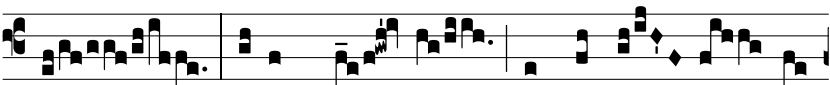
## Tract.

2.

I



-pse in-vo-cá-bit me : \* Pa-ter me-us es



tu : De-us me- us, et suscé- ptor sa-

lú-tis me- ae.  $\Psi$ . Et ego primogé-ni- tum

ponam il- lum : excél- sum prae ré-

gi-bus ter-rae.  $\Psi$ . Et po- nam

in saécu- lum saé-cu- li semen e- jus :



et thronum e- jus sic- ut di- es \* cae-

