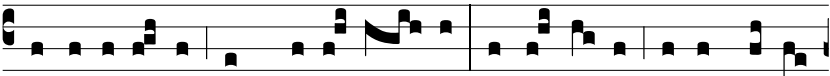


Intr.
5.

D



omi-ne, re-fú-gi-um fa- ctus es no- bis, a ge-



ne-ra-ti-ó-ne, et progé-ni- e: a sáe-cu-lo, et in sáe-cu-



lum tu es. Ψ . Pri-úsquam montes fí-e-re-nt, aut for-



ma-ré-tur terra, et orbis: a sáe-cu-lo et usque in sáe-cu-lum



tu es De-us. Gló-ri-a E u o u a e