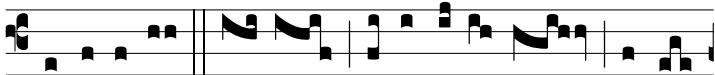


Intr.
2.



M

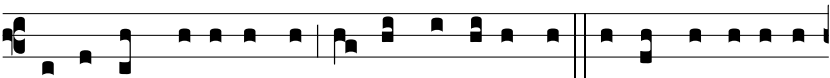
i-hi autem ni- mis hono-rá-ti sunt amí-



ci tu- i De- us: nimis confortá-tus est prin- ci-pá- tus



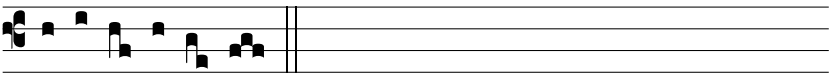
e-ó- rum. *T. P.* Al-le-lú- ia, al-le- lú- ia. Ψ .



Dómi-ne, probásti me, et cogno-vísti me: tu cogno-vísti ses-



si- ónem me- am, et re-surrecti- ó-nem me- am. Gló-ri- a



E u o u a e