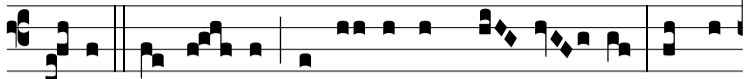


Intr.
2.

E



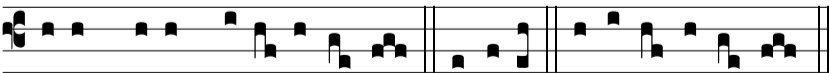
c-ce advé- nit domi- ná-tor Dó- mi- nus: et re-



gnum in ma- nu e- jus, et po- téstas, et impé-



ri- um. Ψ . De- us ju- dí- ci- um tu- um re- gi da: et justí-



ti- am tu- am fí- li- o re- gis. Gló- ri- a E u o u a e