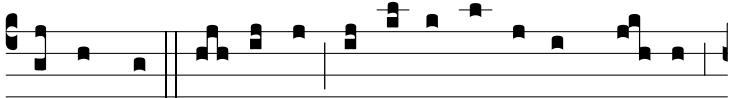
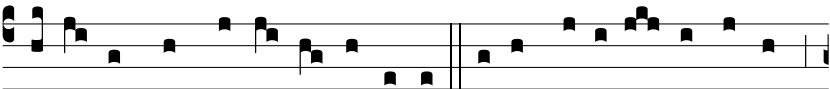


Ant.  
3.



**D**

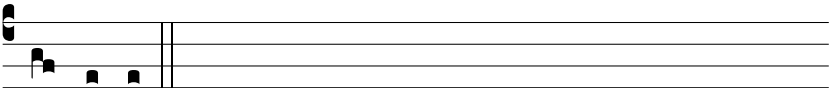
o-ce me, Dó-mi-ne, ra-dí-ces árbo-ris me-æ



cæ-lo et non terræ in-fí-ge-re: ne in fó-li-is verbó-rum,



sed pó-ti-us in frúcti-bus bonó-rum ó-pe-rum, fi-dé-lis



cognó-scar.