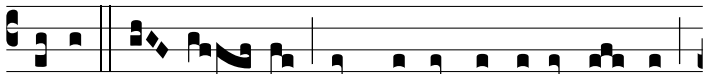


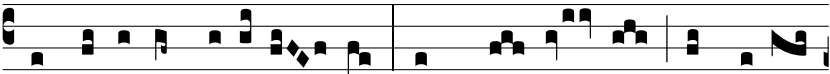
Comm.

8.

D



i-cit Dó- mi- nus: Implé-te hýdri- as a-qua,



et ferte architriclí- no. Cum gu- stás- set architri-



clí- nus aquam vi-num factam, di- cit spon-so: Ser-



vá-sti bo-num vi-num us-que ad-huc. Hoc signum fe-cit



Je-sus primum co-ram di-scí-pu-lis su-is.