

Intr.
2.

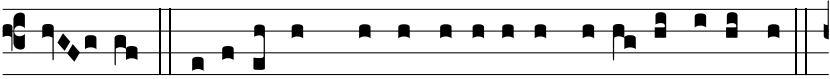
V



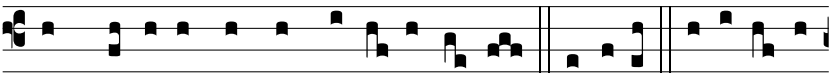
i-dé-runt ingrés- sus tu-os, De- us, ingrés-



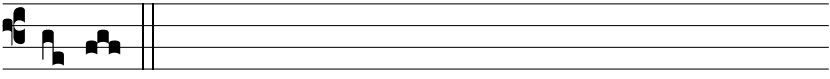
sus De- i me- i: re-gis me- i qui est in



san- cto. Ψ . Illuxé-runt co-rusca-ti- ónes tu-æ orbi terræ:



commó-ta est et contrému- it terra. Gló-ri- a E u o u



a e.