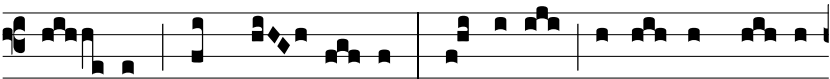


Intr.
2.

D



o-minus illumi-ná-ti-o me-a, et sa-lus



me-a, quem ti-mé-bo? Dó-minus de-fén-sor vi-tæ



me-æ, a quo tre-pi-dá-bo? qui trí-bu-lant me



i-ni-mí-ci me-i, ipsi infirmá-ti sunt, et ce-ci-



dé-runt. Ψ . Si consístant advérsus me castra, non timé-



bit cor me-um. Gló-ri-a E u o u a e.