

Ant.
8.



A

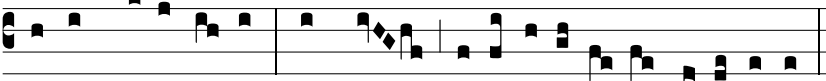
b O-ri-énte vené-runt Ma-gi in Béthle-em a-



do-rá-re Dómi-num: et apertis thesáuris su-is pre-ti-ó-sa



múne-ra obtu-lé-runt: aurum si-cut Re-gi magno, thus



si-cut De-o ve-ro, myrrham sepultúrae e-jus, alle-lú-ia.