

Comm.

4.

J



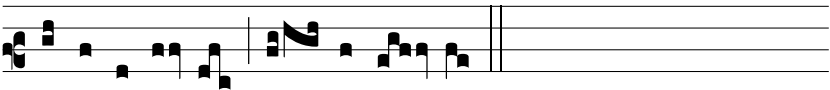
e-rú-sa-lem, quæ æ-di-fi-cá-tur ut cí-vi-tas,



cu-jus parti-ci-pá-ti-o e-jus in i-dípsum: illuc e-nim ascen-



dé-runt tri-bus, tri-bus Dómi-ni, ad confi-téndum



nómi-ni tu-o Dómi-ne.