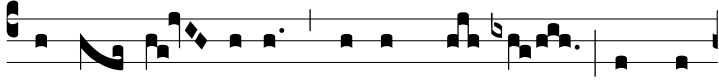


Intr.
1.



M

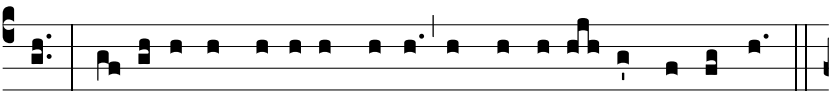
E-di- tá- ti- o * cordis me- i in con-



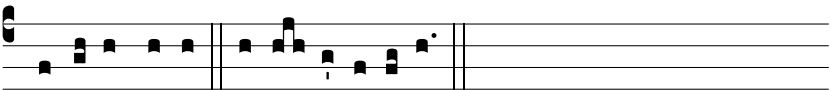
spé- ctu tu-o semper : Dómi-ne adjú- tor me-us, et



redémptor me- us. *Ps.* Cae-li enárrant gló-ri- am De-



i : * et ópe-ra mánu-um e-jus annúnti- at firmaméntum.



Gló-ri- a Patri. E u o u a e.