

3.

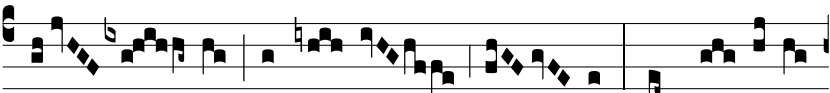


A

l-le-lú-ia.



ψ. In te, Dó-mi-ne, spe-rá-vi, non con-



fún-dar in æ-tér-num: in ju-stí-ti-



a tu-a lí-be-ra me, et é-ri-pe me: inclí-na



ad me au-rem tu-am, accé-le-ra



ut e-rí-pi-as me.