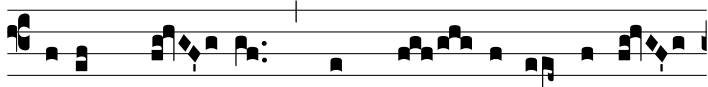


Comm.

2.

P



Otum me- um * cum fle- tu tempe-rá-



bam : qui- a é-le-vans al-li-sísti me : et e-



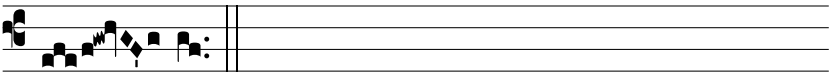
go sic-ut fenum á- ru- i : tu autem, Dó-mi- ne,



in æ-tér- num pérma- nes : tu exsúrgens mi-se-rébe-



ris Si- on, qui- a ve-nit tempus mi-se-réndi e-



jus.