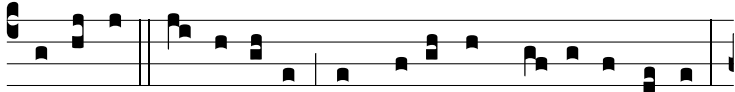
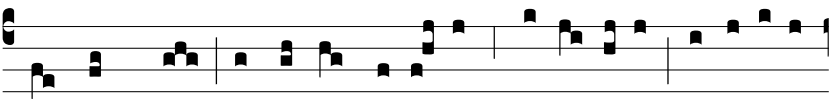


Ant.
3.



V

írgi-nis Catha-rínæ hæc di-es est di-cá-ta sacris,



ut numquam tantæ sancti-tá-tis præstánti-a mortá-li-um



memó-ri-a excí-de-re que-at, et cunctis ce-le-bér-rima



perpé-tu-o fi-at. *T. P.* Al-le-lú-ia.