

Intr.
7.

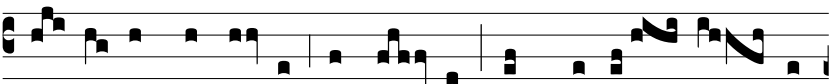
E



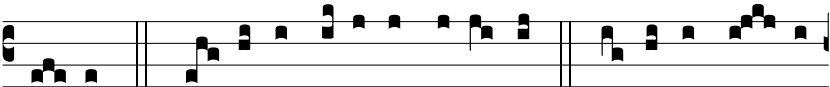
f-fú-sum est in terra je-cur me- um su-



per contri-ti-ó- ne fĩ- li-æ pópu- li me- i, cum de-



fĩ- ce-ret párvu- lus, et la- ctens in pla-té- is óp-



pi- di. ♯. Lau-dá-te pú-e-ri Dómi-num, paudá-te no- men



Dómi-ni. Gló- ri- a E u o u a e.