

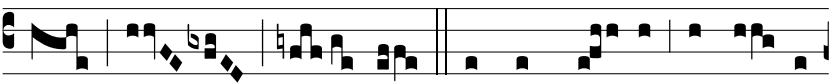
P



a-rá- sti in conspé-ctu me- o men-sam,



advér- sus e- os, qui trí- bu-

lant me.  $\Psi$ . Impinguá- sti in ó- le-

o ca- put me- um:



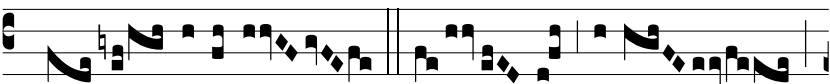
et ca-lix me- us i- né- bri- ans quam præ- clá-



rus est!

 $\Psi$ . Et mi- se- ri- cór- di- a tu-

a sub-sequé- tur me, ó-



mni- bus di- ébus vi- tæ me-æ.

