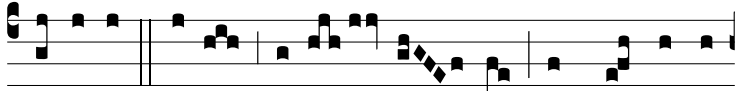


Intr.
3.

C



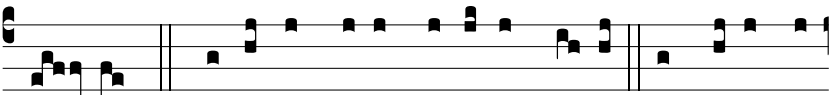
a-ri-tas De-i diffú- sa est in cór-di-bus



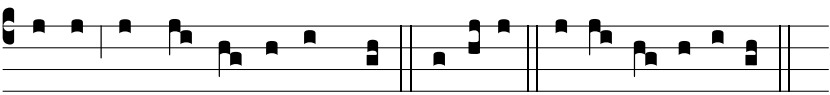
no- stris, al-le-lú- ia, per inha-bi-tán- tem Spí- ri-



tum e- jus in no- bis, alle- lú- ia, al-le-



lú- ia. Ψ . Dómi-ne, De-us sa-lú-tis me-æ: in di-e cla-



má-vi, et no-cte co-ram te. Gló-ri-a E u o u a e.