

Grad.
2.

Q



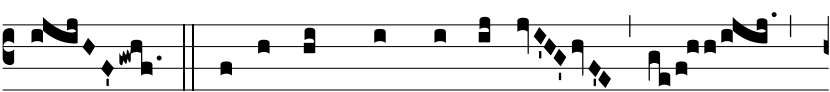
UI ámbu- lat * fraudu- lén- ter, revé-



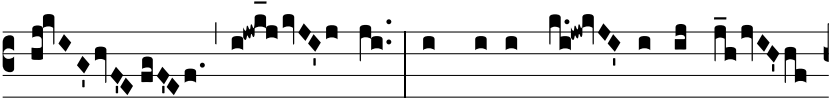
lat arcá- na : qui au- tem fi- dé- lis



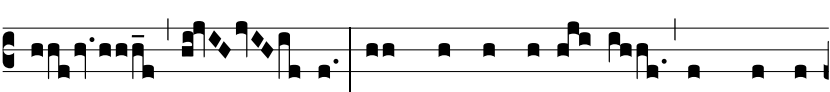
est á- nimi, ce- lat.



¶. Dómi- ne, quis ha- bi- tá-



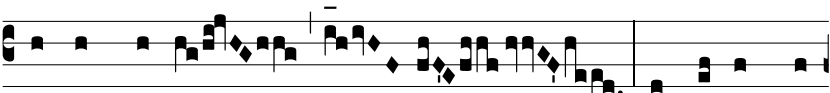
bit in taberná- cu- lo tu-



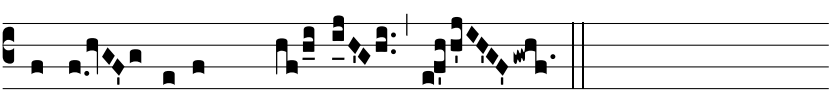
o, aut quis requi- é- scet in monte



sancto tu- o? Qui non e- git do- lum



in lingua su- a, nec fe- cit pró-



ximo su- o * ma- lum.