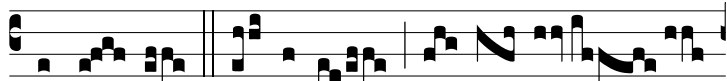


Tract.
8.

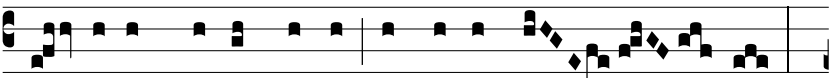
V



í-ne- a fa-cta est di- lé-cto



in cornu in loco ú- be- ri. Ψ . Et ma-



cé- ri- am circúmde- dit, et circúmfo- dit,



et plantá- vit ví- ne- am So- rec, et ædi- fi-



cá- vit turrim in mé- di- o e- jus. Ψ . Et tór- cu- lar



fo- dit in e- a: ví- ne- a e- nim Dómi-



ni Sá- ba- oth do- mus Is- ra- òl est.

