

Grad.

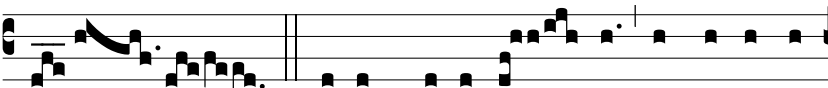
5.

L

O-cus i- ste * a De- o fa- ctus est, inae-



stimá-bi- le sacra- mén- tum, irreprehen- sí- bi- lis



est. Ψ . De- us, cu- i ad- stat Ange- ló- rum



cho- rus, exáu-



di pre- ces servó- rum * tu- ó- rum.

