

Resp.

2.
S



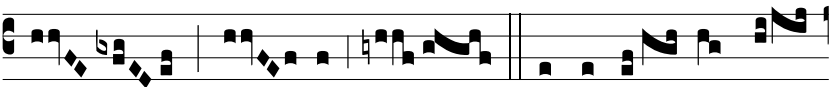
pe-ci- ó- sus for- ma



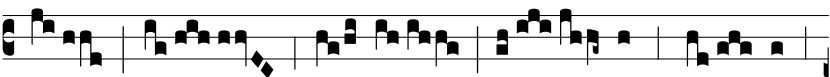
præ fi- li- is hó- mi-num, dif-fú- sa



est grá-ti- a in lá- bi- is



tu- is. Ψ . E-ructá- vit cor



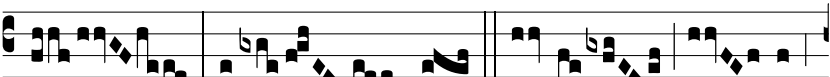
me- um ver- bum bo- num:



di-co e- go ó- pe-ra me- a re-



gi: lingua me- a cá- la- mus scribæ,



ve- ló- ci- ter scri- bén- tis.

