

Tract.
2.

T



u es Petrus,

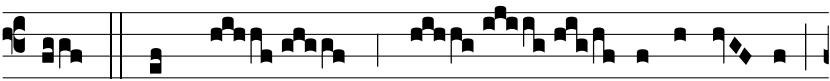
et su-per hanc



petram

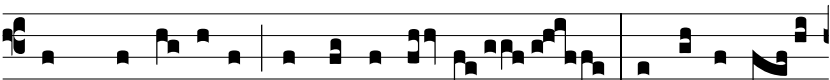
ædi-fi-cá- bo

Ecclé-si- am me-



am. Ψ . Et por-

tæ ínfe- ri



non præ-va-lébunt advérsus e- am:

et ti-bi da-



bo cla- ves regni cæ- ló-rum. Ψ . Quodcúm-



que li-gáve- ris super ter-

ram,



e-rit li-gá- tum et in cæ-

lis. Ψ . Et



quodcúmque

sólvé- ris super ter-



ram,

e-rit so-lú- tum



et in cæ-

lis.