

Resp.  
2.

A



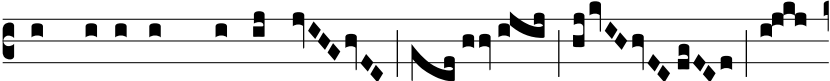
b occúltis me- is mun-da me, Dó-



mi-ne: et ab a-li-é- nis



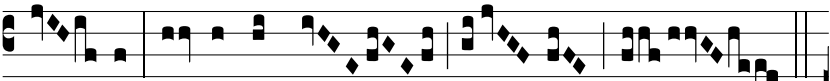
par-ce ser- vo tu- o.  $\Psi$ . Si me- i



non fú-e-rint domi-ná-



ti, tunc imma-cu-lá-tus e-



ro: et emundá- bor



a de- lí- cto má-ximo.