

Resp.
2.
C



ándi- di facti sunt Na- za- ræ- i e- jus, al-



le- lú- ia: splendó-rem De-o dedé- runt, al-le-



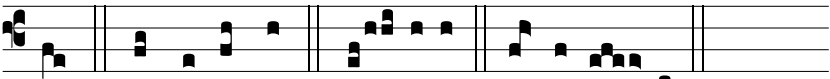
lú- ia: * Et sic-ut lac co-agu-lá-ti sunt † Al-le-lú- ia,



al-le- lú-ia. ♯. In o-mnem terram e-xí-vit so-nus



e-ó- rum, et in fi-nes orbis terræ ver- ba e- ó-



rum. * Et si-cut lac. Gló- ri- a. † Al-le-lú- ia...