

Intr.
2.

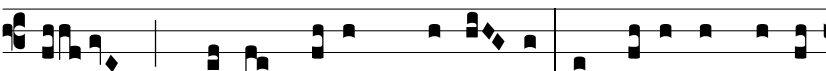
D



o-minus for-ti-túdo ple-bis su- æ, et pro-té-



ctor sa- lu-tá- ri- um Chri-sti su- i est: sal-vum



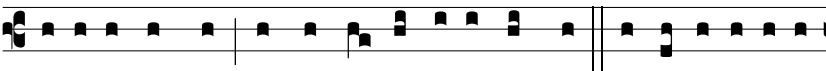
fac póp-u-lum tu-um, Dómi- ne, et bé-ne-dic he-re-



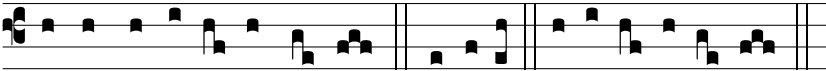
di- tá-ti tu- æ, et rege e- os usque in sæ-



cu- lum. Ψ . Ad te, Dómi- ne, clamábo, De- us me- us ne



sí-le- as a me: nequando tá-ce- as a me, et assimi-lábor



descendénti-bus in la-cum. Gló-ri- a E u o u a e.