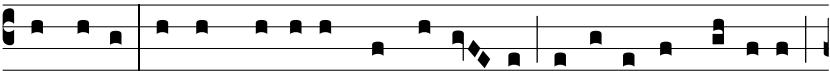


Ant.
8.

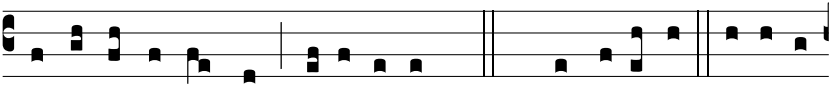
V



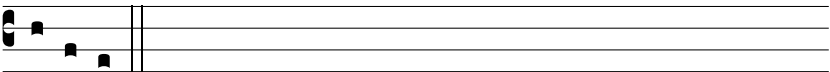
éspe-re autem Sáb-ba-ti, quæ lu-céscit in prima



sábba-ti, ve-nit Ma-rí-a Magda-lé- ne, et álte-ra Ma-rí-a,



vi-dé-re se-púlcrum, alle-lú-ia. *Cant. Magní-fi-cat. E u o*



u a e.