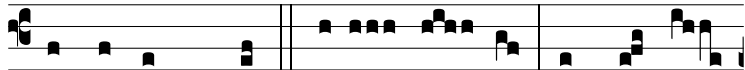
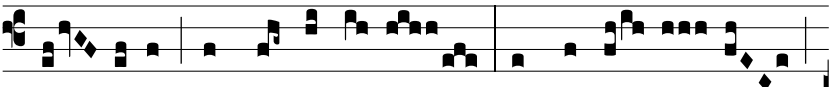


Intr.
2.

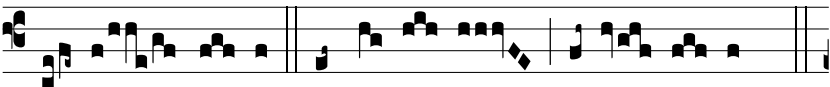
T



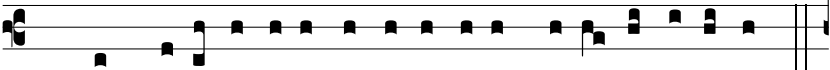
ERRÍ-BI-LIS est * locus i- ste: hic do-mus



De- i est, et por-ta cœ-li: et vo-cá- bi- tur



au- la De- i. (Al-le-lú- ia, alle- lú- ia.)



Ps. Quam di-lécta taberná-cu-la tu-a, Dómi-ne virtú-tum! *



concu-píscit, et dé-fi- cit á-ni-ma me- a in átri- a Dómi-



ni. ♯ Gló-ri- a Patri E u o u a e